

FYE for the CCC

How An Entire Campus Can Learn to "Own" First Year Student Success

By:

Cecile Davis-Anderson, Shelagh Rose, Cynthia Olivo
Pasadena City College



Think-Pair-Share

- Take 2 minutes to freewrite your response to this prompt:
What areas at your college consider themselves the home of first year student success?
- Find a partner from a different school and take turns sharing your responses. (90 seconds each)
- If you heard some new ideas, please share them with the whole group.

PCC by the Numbers

- 22,671 students
 - Hispanic: 42.8%
 - Asian/Pacific Islander: 23.5%
 - White: 17.1%
 - African American: 5.5%
- Continuing Students: 67.7%
- First-Time Students: 16.9%



PCC's FYE Program last year



PASADENA CITY COLLEGE

This year scale up to 1,500



COLLEGE
EST. 2012
ONE
PASADENA CITY COLLEGE

PCC's FYE Program

- Started in 2011 w Title V grant
- FYE Team: A Counselor, and ESL , English , and Math Instructors
- Math Jam Orientation/iJam
- Full course load (English, Math, Freshman Seminar, GE)
- One Book, One College (Year 1, The Pact; Year 2: The Immortal Life of Henrietta Lacks; Year 3 Southland)
- Student Conference
- Student homework and tutoring lab
- First Year Counselors & Coaches



Pasadena: Our Story of Hope



What we are doing to
change the culture on
our campus



The Slump

- Silos
- Turf protection
- Limited access to Professional Learning

Seeds of Change

- Educational Master Plan was created on our campus
- Internal Grant Program
 - 2+2+2
- Title V Grant
- Kellogg West – Leadership Retreat



What drove us

5537

- Number of first time students who enrolled at PCC in 2004



About the 5537 – 6 years later

Developmental Education

N = 3,408

- 12% earned an AA/AS degree
- 5% earned a certificate
- 25% transferred
- 69% no discoverable milestone

Non-Developmental Education

N = 2,129

- 10% earned an AA/AS degree
- 4% earned a certificate
- 41% transferred
- 55% no discoverable milestone



Our Community

- Interdisciplinary Team
- Cultivating Relationships
- Inquiry Mindset
- Do the Research – FYE Conference
- Divide the work



Pilot Imperfectly

Create the Dream

- 2 hour weekly meetings
- Researched & wrote curriculum, grants
- Considered texts

Live the Nightmare

- “FYE Seminar”
 - 300 students
 - Coaches to the rescue
- Professional Learning Workshops

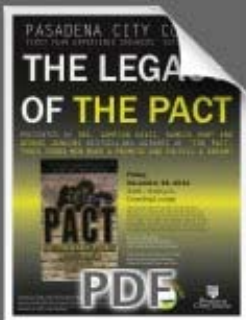


Bright Spots

- One Book, One College
- Student Conference



DOWNLOADS



The Three Doctors at PCC Event Flyer



Discussion Questions

the doctors also find time to give back to the community through their non-profit organization, **The Three Doctors Foundation**, which recently celebrated its 11th year of offering free health, education and mentoring programs for youth and families in the NY/NJ area. The doctors continue to make numerous television appearances in support of their message of health, education and youth mentoring, including appearances on the Oprah Winfrey Show and recently on the CBS Morning News. There is a **documentary of their story** which will be shown as part of the program. Most exciting, we have booked all three doctors to come and present this November 18, 2011 from 3:30 to 6pm in the Creveling Lounge.

The Impact of The Pact



EVENTS

November Book Club Discussion Groups Every Tuesday and Thursday leading up to *The Legacy of The Pact* event. [Click here for times and locations.](#)

November 16, 17 Documentary Screenings Two screenings of *The Pact* documentary. Nov 16, 3 - 5pm, Library Terrace Nov 17, 12 - 2pm, Library Terrace

November 18 *The Legacy of The Pact* 3:30 - 6pm, Creveling Lounge Presented by Drs. Davis, Hunt, & Jenkins - bestselling authors of "The Pact." [Download the flyer](#)

PHOTOS



Our Learning Continues

- FTLA – Faculty Teaching & Learning Academy
 - Technology
 - Reading Apprenticeship
 - Syllabus Redesign
- BSILI 5
 - Networking
 - Support from like-minded individuals/badgers
 - Communities of Practice – Reading Apprenticeship, Habits of Mind
 - Took ownership of leadership roles



Scale Up

- 900 FY Students + 150 F1 Visa Students
- Freshman Seminar Created (College 1)
 - 3 units
 - Transferrable to UC/CSU (Category E)
 - Info Literacy, Critical Reading Skills, College Success Behaviors
 - Interdisciplinary faculty
- 29 sections of College 1



Student Success Summit

- [Anna Dawahare College One Video](#)

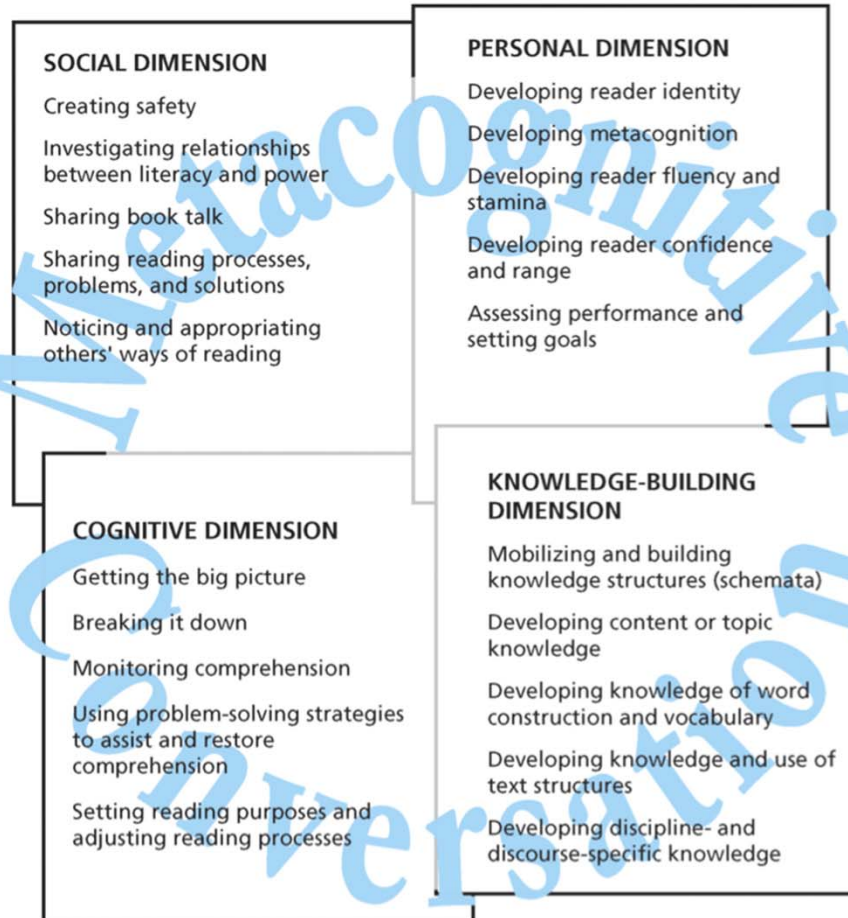


Let's Get Ready!!

- One week professional learning institute
 - College 1 Institute – supported by 3CSN
 - 32 instructors from all 12 divisions on campus
 - Embedded Reading Apprenticeship
 - Introduced Habits of Mind



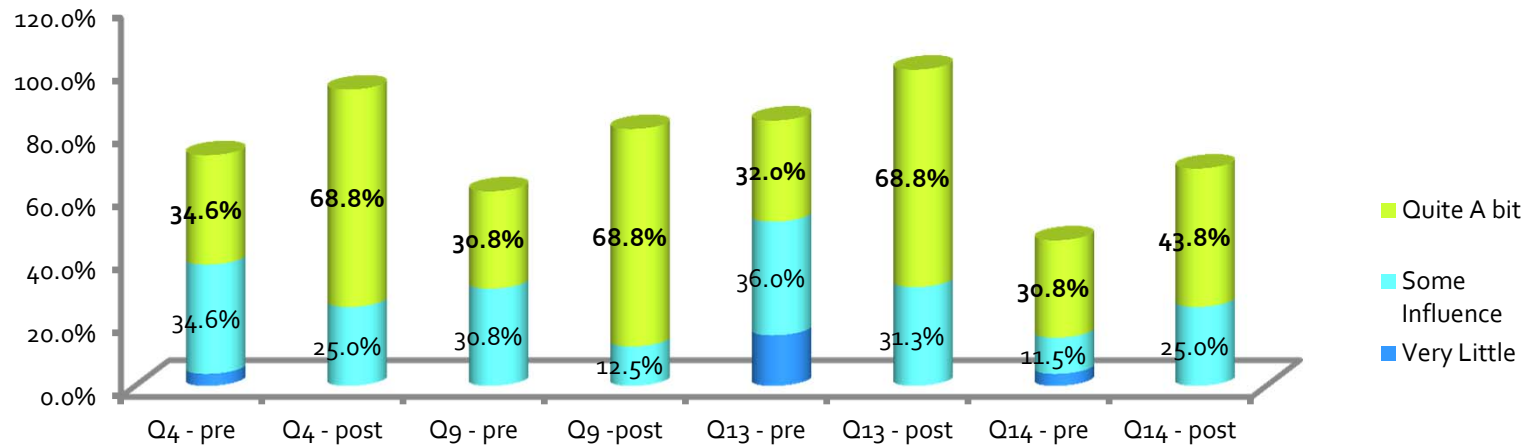
Reading Apprenticeship



Habits of Mind



Faculty Data



- **Question # 4** How much can you do to motivate students who show low interest in schoolwork?
- **Question # 9** How much can you do to help your students value learning?
- **Question # 13** How much can you do to improve the understanding of a student who is failing?
- **Question #14** How much can you use a variety of assessment strategies?

Faculty Responses

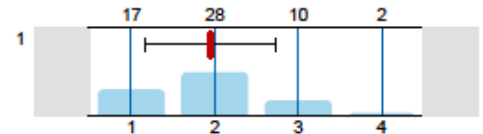
- I loved the fact that most activities were modeled so we could understand the process and how to integrate them which was the practical application component. And the variety of activities and resources presented gave lots of creative ideas for building our course.
- I feel like there's lots of support within our group and all of the PCC support services. The main thing is to keep the connection between our colleagues so we don't feel isolated and can share our successes and challenges.



Student Data: Reading & Metacognition

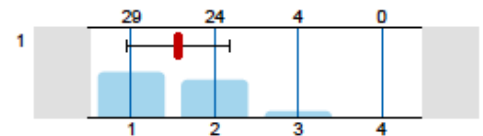
1. Course Embedded Reading Assessment

- 1.1) **Metacognition:** Awareness and articulation of thinking process; mental engagement



n=57
av.=1.95

- 1.2) **Repertoire of Strategies:** Strategy use; range and appropriateness of strategies (to reading problem being solved)

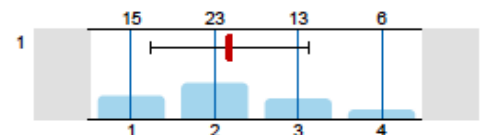


n=57
av.=1.56

- 1.3) **Use of Text Form, Structure, and Schema:** Understanding and use of conventional forms of text discourse structure and structural features of text to make meaning; use of text schema knowledge (such as what boldface means or what transitions are signaling) to comprehend meaning

The evaluation will not be displayed due to low response rate.

- 1.4) **Comprehension:** Understanding the important ideas in the text

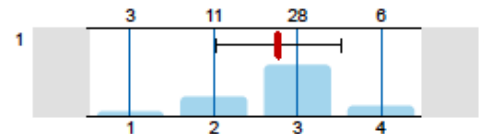


n=57
av.=2.18

Student Data: Reading & Metacognition

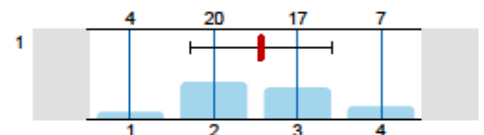
1. Course Embedded Reading Assessment

1.1) **Metacognition:** Awareness and articulation of thinking process; mental engagement



n=48
av.=2.77

1.2) **Repertoire of Strategies:** Strategy use; range and appropriateness of strategies (to reading problem being solved)

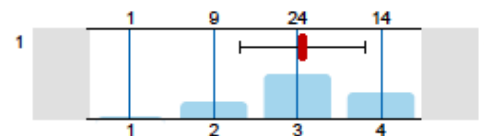


n=48
av.=2.56

1.3) **Use of Text Form, Structure, and Schema:** Understanding and use of conventional forms of text discourse structure and structural features of text to make meaning; use of text schema knowledge (such as what boldface means or what transitions are signaling) to comprehend meaning

The evaluation will not be displayed due to low response rate.

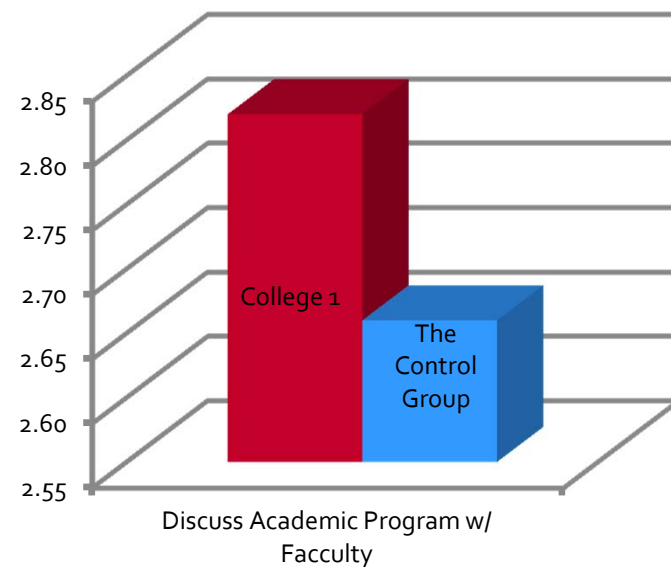
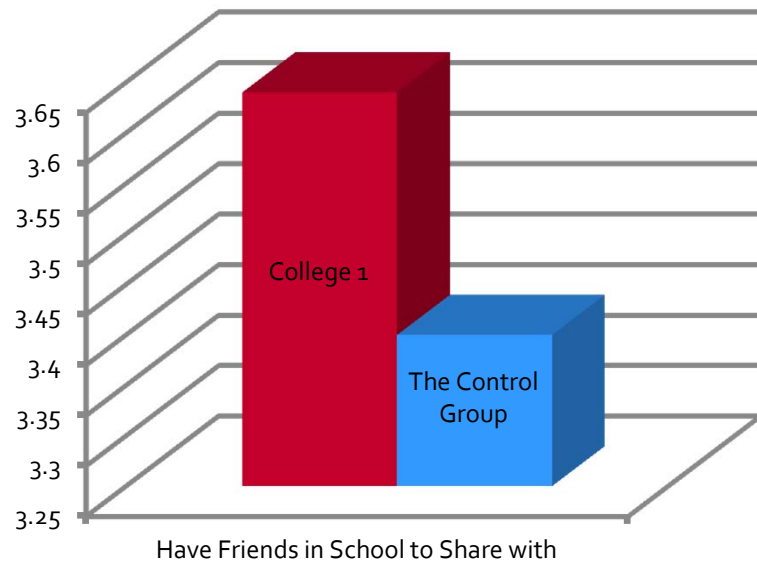
1.4) **Comprehension:** Understanding the important ideas in the text



n=48
av.=3.06

Student Data – Pilot Year

- FYE students had higher engagement with faculty and peers.



Student Data-Year 2

	F	t	p
Ability to write in a clear and organized manner	8.93	-2.55	0.01
Discussed grades or assignments w/ an instructor	5.39	-2.51	0.01
Talked about career plans w/ instructor or advisor	13.29	-5.63	0.00
Discussed ideas from your readings with instructors outside of class	1.88*	-3.25	0.00
Received prompt feedback from instructors on performance	26.35	-2.56	0.01

	F	t	p
Ability to conduct and present research findings...	3.30	-1.97	0.05
The opportunities to meet w/ faculty outside of the classroom	2.81	-2.00	0.05
The process of registering for classes	0.01	-1.99	0.05
Used email to communicate w/ an instructor	3.97	-1.93	0.05



Where are we now?

- College 1 Institute, 2.0
 - 41 sections, 1200 students
 - Faculty, Student Affairs, Administrators

Paying it Forward



- Kellogg West 2 – Program Redesign Retreat
 - Math, English, ESL – credit & noncredit, Counseling, Social Sciences, CTE
 - Problem-based Learning (PBL)
 - Reading Apprenticeship

Your Campus Plan

Who are your campus champions for FYE? Who in instruction gets counseling? Who in counseling can help build relationships with instructional faculty? Who in administration can advocate/provide cover?

What components would work on your Campus? (Extended Summer Orientation, First Year Seminar, Coaching, Peer Mentoring, One Book, Student Conference, etc.)

What Challenges Would You Face? What are some possible resources for dealing with them?



Q & A

Cecile Davis-Anderson (cmanderson@pasadena.edu)

Shelagh Rose (serose@pasadena.edu)

Cynthia Olivo (cdolivo@Pasadena.edu)

